

# Wake™ Pro 230

Stability, power and music  
to tow like a pro.



 Sand / Dazzling Blue

Rotax® 1630 ACE™ - 230		ST3™ Hull		BRP premium audio system	
CAPACITY		ROTAX ENGINE		1630 ACE™ - 230	
Rider capacity	3	Displacement	1,630 cc		
Weight capacity	272 kg	Power (hp)	230 hp		
Fuel capacity	70 L	Intake system	Supercharged with external intercooler		
Glove box	2.9 L	Cooling	Closed-Loop Cooling System (CLCS)		
Front bin	96 L	Reverse system	Electronic iBR®*		
Storage capacity - Total	98.9 L	Starter	Electric		
		Fuel type	95 octane		
		Throttle system	iTCT™ (Intelligent Throttle Control)		
		Exhaust System	D-Sea-Bel™ system		
DIMENSIONS		GAUGE			
Length (bumper to bumper)	345 cm	Type of gauge	10.25 in. touchscreen display with BRP Connect		
Width	125.5 cm (w/o rack)	Main functions	• BRP Connect • Music • Navigation • Bluetooth+ connectability • Speedometer • RPM		
Height	114 cm		• Clock • VTS™ • Fuel consumption • Fuel autonomy • Water temperature • Vehicle hours		
HULL		iTCT System - mode		• Sport mode • ECO® mode • Slow mode	
Type	ST3™ Hull			• Speed regulator • Ski mode	
Material	Fiberglass				
OTHER FEATURES		WEIGHT			
• Ergolock™ two-piece seat • Seat strap • iBR® - Intelligent Brake & Reverse • iDF - Intelligent Debris Free System • VTS™ (Variable Trim System) • Boarding ladder • RF D.E.S.S.™ key • Direct-Access Front Storage • Watertight phone compartment		Dry weight (oil, coolant, no fuel)		379 kg	
• LinQ™ attachment system • BRP Audio - premium system • Wide-angle mirrors • Handle Grips with palm rest • Footwell carpets • Large swim platform • USB Port • Tilt steering • Ski tow eye		Power to weight ratio (HP / Kg)		0.61	
WARRANTY					
		BRP limited warranty covers the watercraft for two years.			

## WHAT'S NEW

- 10.25 in. touchscreen display with BRP Connect

## KEY FEATURES

- Rotax® 1630 ACE™ - 230
- ST3™ Hull
- BRP premium audio system
- iDF - Intelligent Debris-Free Pump System
- iBR® - Intelligent Brake & Reverse\*
- Watertight phone compartment
- Direct-access front storage
- Boarding ladder
- LinQ retractable ski pylon
- Speed-based ski mode
- Removable wakeboard rack
- Wake™ graphics



 Sand and Dazzling Blue



#### 10.25 in Touchscreen Display with BRP Connect

Bring your on-water experience to another level with this premium and elegant touchscreen display developed specifically for Sea-Doo riders. Enjoy enhanced connectivity and intuitive features including ride statistics, a compass, media control, marine navigation with the BRP GO! app and much more.



#### BRP Audio - premium system

A factory-installed, truly waterproof Bluetooth\* audio system for an extra dose of fun and entertainment on the water.



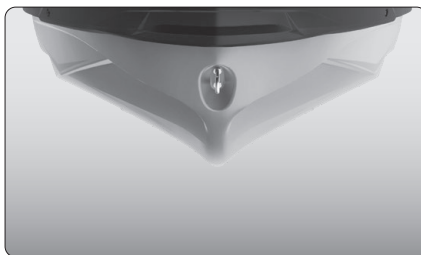
#### Watersport Essentials

Everything you need to practice watersports. A quick install retractable ski pylon that stows away when not in use. Features spotter hand grips and rope storage. A wakeboard rack provides convenient storage and transport of a wakeboard.<sup>1</sup>



#### ROTAX® 1630 ACE™ - 230 ENGINE

This powerful engine comes standard with a supercharger and external intercooler. It is optimised to run on regular fuel, which lowers fuel costs.



#### ST3™ Hull

An innovative hull that sets the benchmark for rough water handling, stability, and offshore performance.



#### Direct-Access Front Storage

All your gear within arm's reach thanks to a 96 L front storage area, easily accessible from a seated position. Simply raise the handlebars to access essentials for any adventure.

\*Electronic brake, neutral and reverse.

<sup>1</sup> Wakeboard and rope not included. Wake Pro 230 shown.

\*Bluetooth® is a registered trademark owned by Bluetooth® SIG, Inc. and any use of such trademarks by BRP is under license.